

# LOT 11 - \$709,000 HOUSE & LAND PACKAGE

4 2.5 1 LOT SIZE: 309m<sup>2</sup>

PINNACLE •  
AT THE  
heart  
OF AUSTRAL  
PINNACLE •



\*Artists Impression

PINNACLE | AT THE HEART OF AUSTRAL

1300 814 848 | PINNACLEAUSTRAL.COM.AU

## JANDSON HOMES HOUSE & LAND PACKAGE

4 2.5 1

**\$709,000**

### AREAS

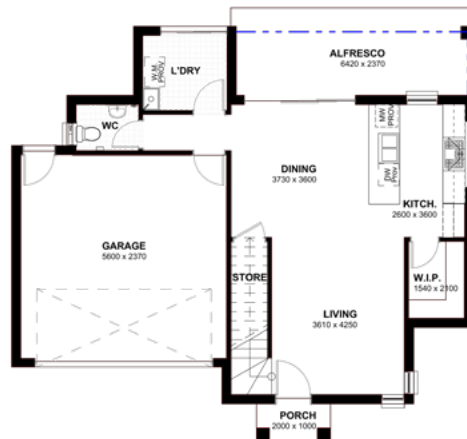
Living Areas	141.3m <sup>2</sup>
Garage	33.88m <sup>2</sup>
Porch	2m <sup>2</sup>
Alfresco	15.29m <sup>2</sup>
<b>TOTAL</b>	<b>192.47m<sup>2</sup></b>

### FEATURES

- Fixed Site and BASIX Costs
- Concrete Driveway & Separate Entry Path
- H1 Class Concrete Slab\*
- 2440mm High Ceilings
- Combination of Carpet and Tiling
- Remote Garage Door Opener
- Stainless Steel Kitchen Appliances
- 6 Months Maintenance Warranty  
(Twice the industry average)

\* If required

Ground Floor



First Floor



# LOT 11 - \$709,000 HOUSE & LAND PACKAGE

4 2.5 1 LOT SIZE: 309m<sup>2</sup>



PINNACLE | AT THE HEART OF AUSTRAL

1300 814 848 | PINNACLEAUSTRAL.COM.AU

Ground Floor (Site Plan)

